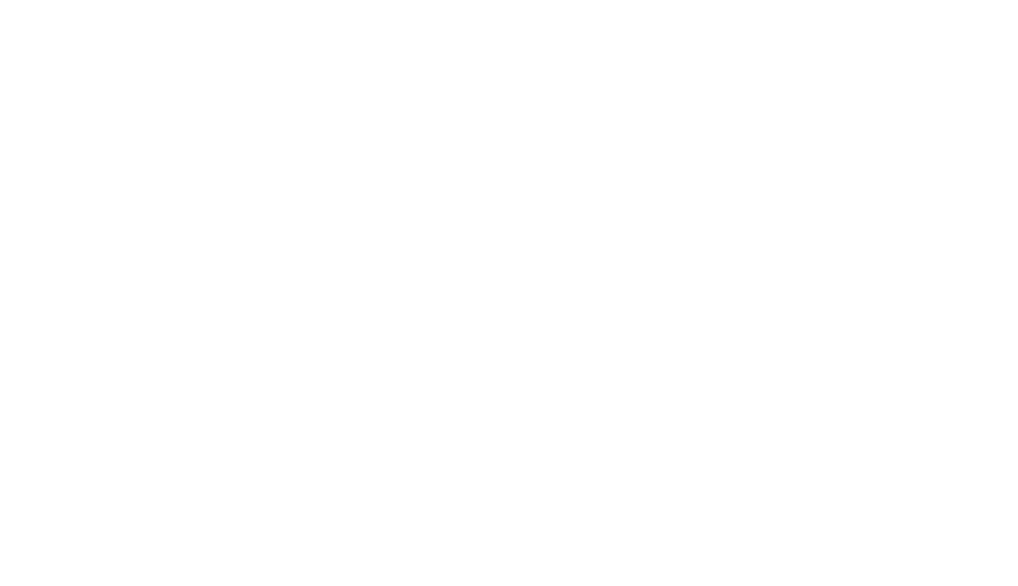
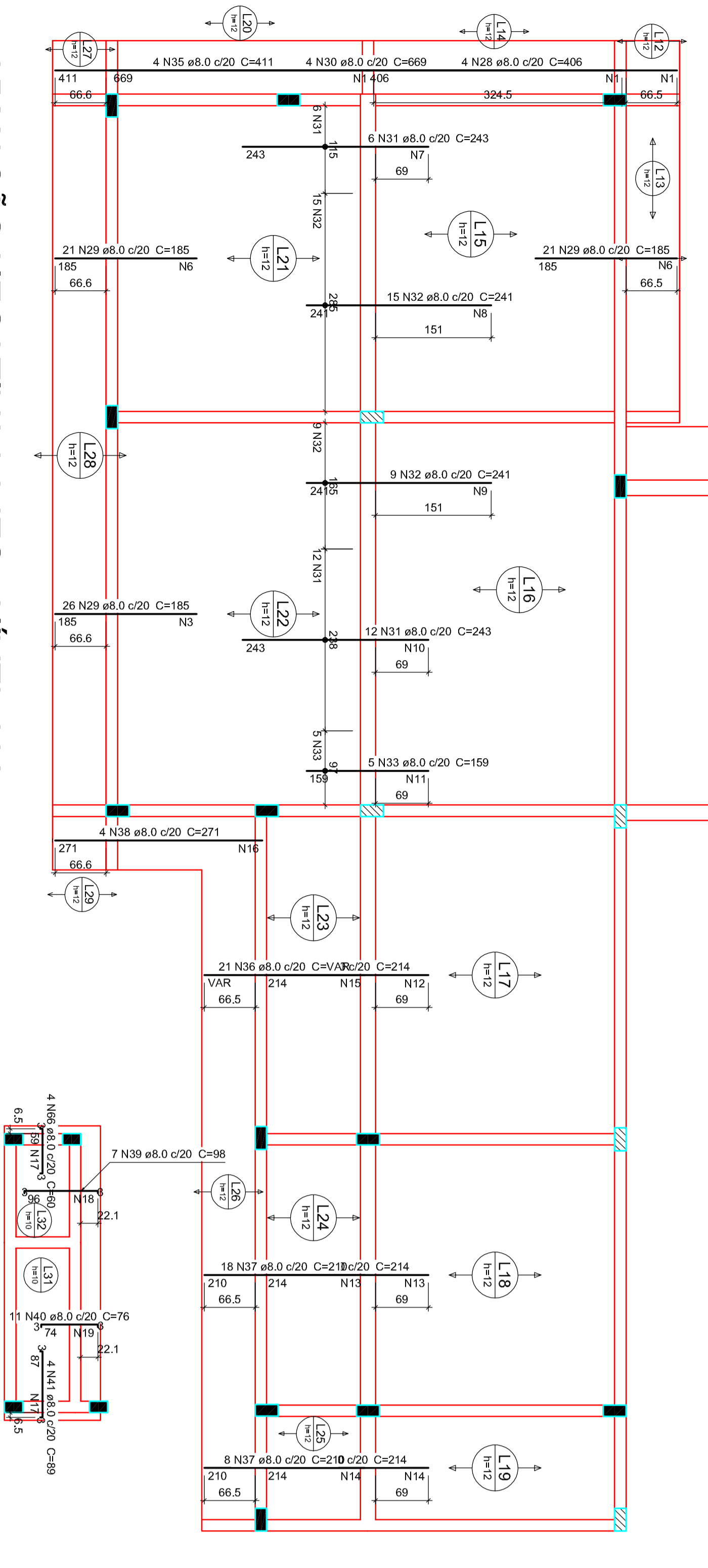


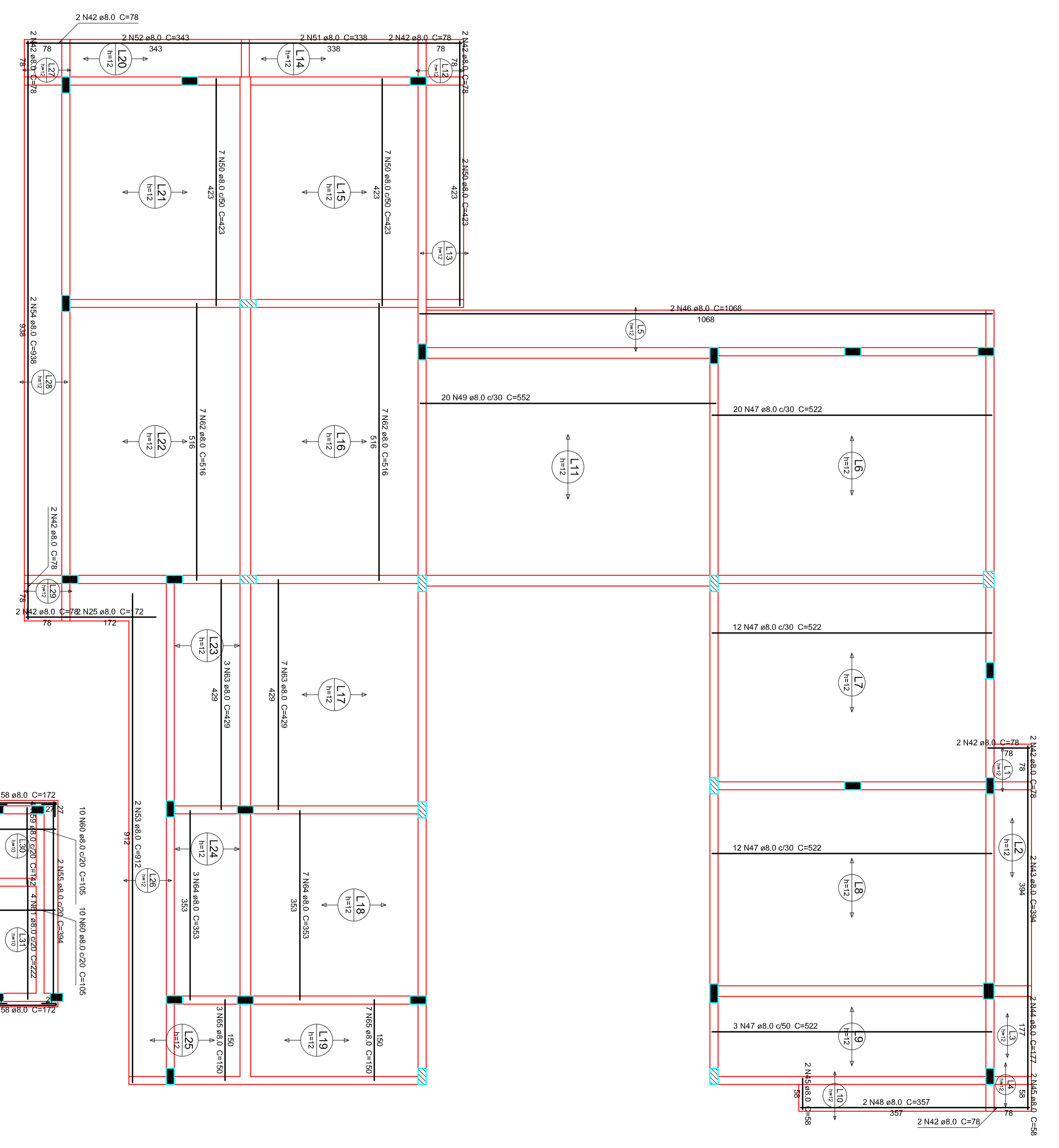
Ferro	Armadura de distribuição
N20	12x12 a8.0 C=78
N19	10x10 a8.0 C=78
N18	10x10 a8.0 C=52
N17	10x10 a8.0 C=43
N16	10x10 a8.0 C=34
N15	10x10 a8.0 C=25
N14	10x10 a8.0 C=16
N13	10x10 a8.0 C=7
N12	12x12 a8.0 C=28
N11	13x13 a8.0 C=38
N10	8x11 a8.0 C=15
N9	11x11 a8.0 C=15
N8	11x11 a8.0 C=15
N7	21x21 a8.0 C=18
N6	10x10 a8.0 C=15
N5	11x11 a8.0 C=15
N4	11x11 a8.0 C=15
N3	11x11 a8.0 C=15
N2	5x11 a8.0 C=7
N1	5x11 a8.0 C=7



DETALHE DA ARMADURA DE SUPERIOR DE CONTINUIDADE DA LAJE
E MONTAGEM DA ARMADURA DE DISTRIBUIÇÃO



ARMAÇÃO NEGATIVA LAJES - NÍVEL 290
ESCALA 1:50



ARMAÇÃO POSITIVA LAJES - NÍVEL 290
ESCALA 1:50

ACO	N	DIAM	Q	UMT	COTMUL
C40	1	5.0	80	78	6064
C40	3	5.0	54	515	27810
C40	5	5.0	7	172	1069
C40	6	5.0	20	415	8300
C40	8	5.0	12	293	3016
C40	10	5.0	12	278	2005
C40	11	5.0	8	195	640
C40	12	5.0	22	355	7810
C40	13	5.0	22	355	7810
C40	14	5.0	22	355	3308
C40	15	5.0	22	355	3308
C40	16	5.0	14	77	1078
C40	17	5.0	14	77	1078
C40	18	5.0	5	135	675
C40	19	5.0	5	135	675
C40	20	8.0	27	253	5441
C40	21	8.0	27	253	5441
C40	22	8.0	28	221	6746
C40	23	8.0	28	221	6746
C40	24	8.0	28	221	6746
C40	25	8.0	28	221	6746
C40	26	8.0	28	221	6746
C40	27	8.0	28	221	6746
C40	28	8.0	28	221	6746
C40	29	8.0	11	135	1445
C40	30	8.0	11	135	1445
C40	31	8.0	18	242	4324
C40	32	8.0	18	242	4324
C40	33	8.0	5	169	785
C40	34	8.0	4	111	964
C40	35	8.0	21	348	6364
C40	36	8.0	21	348	6364
C40	37	8.0	4	227	1084
C40	38	8.0	11	96	836
C40	39	8.0	11	96	836
C40	40	8.0	4	89	356
C40	41	8.0	4	89	356
C40	42	8.0	2	394	788
C40	43	8.0	2	394	788
C40	44	8.0	2	394	788
C40	45	8.0	2	394	788
C40	46	8.0	2	394	788
C40	47	8.0	2	394	788
C40	48	8.0	2	394	788
C40	49	8.0	2	394	788
C40	50	8.0	2	394	788
C40	51	8.0	2	394	788
C40	52	8.0	2	394	788
C40	53	8.0	2	394	788
C40	54	8.0	2	394	788
C40	55	8.0	2	394	788
C40	56	8.0	4	119	478
C40	57	8.0	4	119	478
C40	58	8.0	1	172	172
C40	59	8.0	1	172	172
C40	60	8.0	4	222	668
C40	61	8.0	4	222	668
C40	62	8.0	10	429	4290
C40	63	8.0	10	429	4290
C40	64	8.0	10	429	4290
C40	65	8.0	10	429	4290
C40	66	8.0	10	429	4290
C40	67	8.0	10	429	4290
C40	68	8.0	10	429	4290
C40	69	8.0	10	429	4290
C40	70	8.0	10	429	4290
C40	71	8.0	10	429	4290
C40	72	8.0	10	429	4290
C40	73	8.0	10	429	4290
C40	74	8.0	10	429	4290
C40	75	8.0	10	429	4290
C40	76	8.0	10	429	4290
C40	77	8.0	10	429	4290
C40	78	8.0	10	429	4290
C40	79	8.0	10	429	4290
C40	80	8.0	10	429	4290
C40	81	8.0	10	429	4290
C40	82	8.0	10	429	4290
C40	83	8.0	10	429	4290
C40	84	8.0	10	429	4290
C40	85	8.0	10	429	4290
C40	86	8.0	10	429	4290
C40	87	8.0	10	429	4290
C40	88	8.0	10	429	4290
C40	89	8.0	10	429	4290
C40	90	8.0	10	429	4290
C40	91	8.0	10	429	4290
C40	92	8.0	10	429	4290
C40	93	8.0	10	429	4290
C40	94	8.0	10	429	4290
C40	95	8.0	10	429	4290
C40	96	8.0	10	429	4290
C40	97	8.0	10	429	4290
C40	98	8.0	10	429	4290
C40	99	8.0	10	429	4290
C40	100	8.0	10	429	4290

ENGEON
PROJETO ESTRUTURAL

CLIENTE: MILENA BONFIM

PROJETO: PROJETO ESTRUTURAL DE ARMAÇÃO

ESCALA: INDICADA

DATA: 09/09